



Ceiba AT 25

CONDO PARADISE



Paradise is your home



The most stylish equity investment in Playa del Carmen is in Ceiba 25 Condo Paradise, an exclusive Residence project that raises the standards of design, luxury and comfort in developments along the Riviera Maya.





Amenities



Restaurant

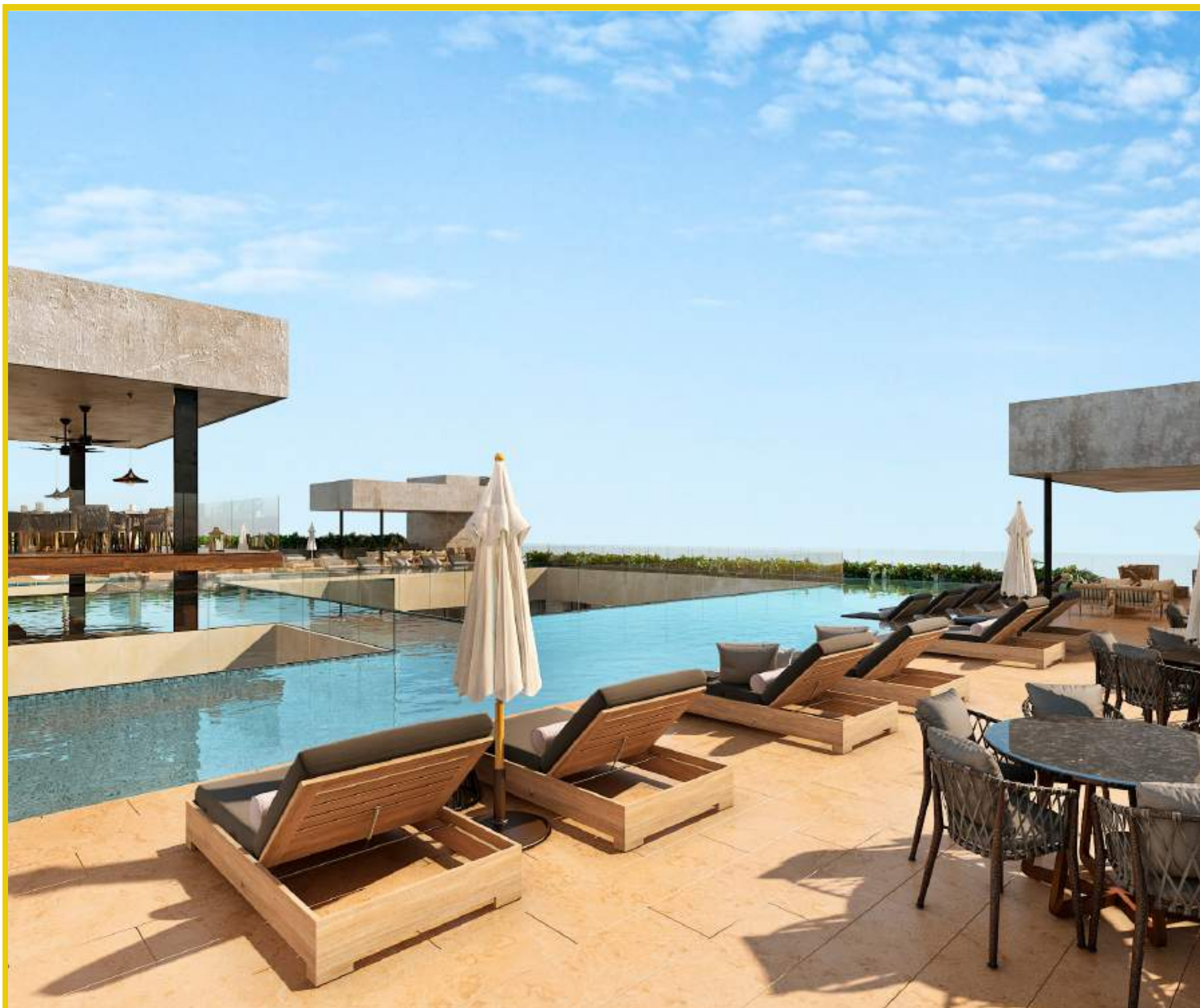
Infinity Pool

Fitness Center

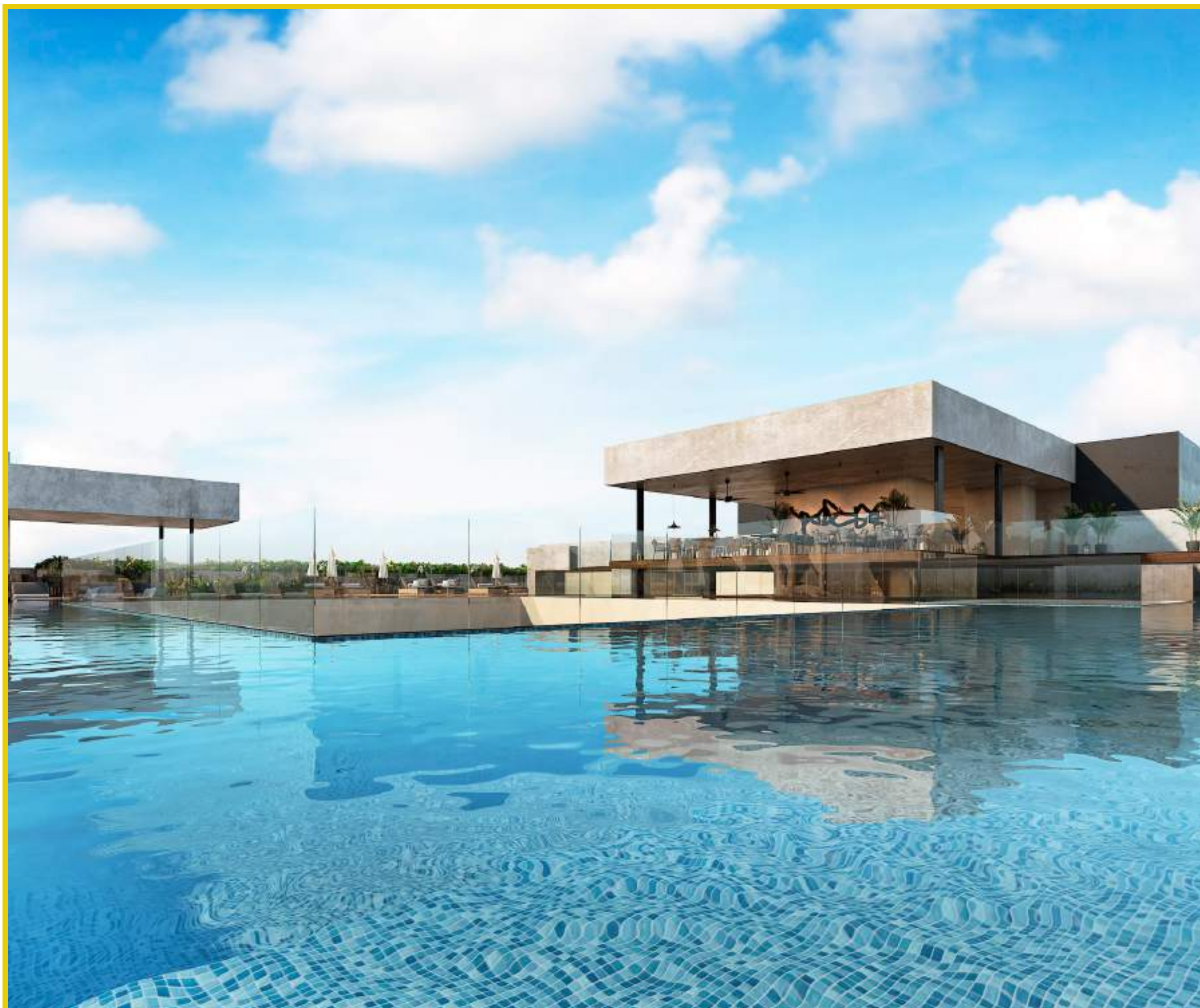
Pool Bar

Parking lot

Multipurpose room



Infinity Pool and pool bar with panoramic views



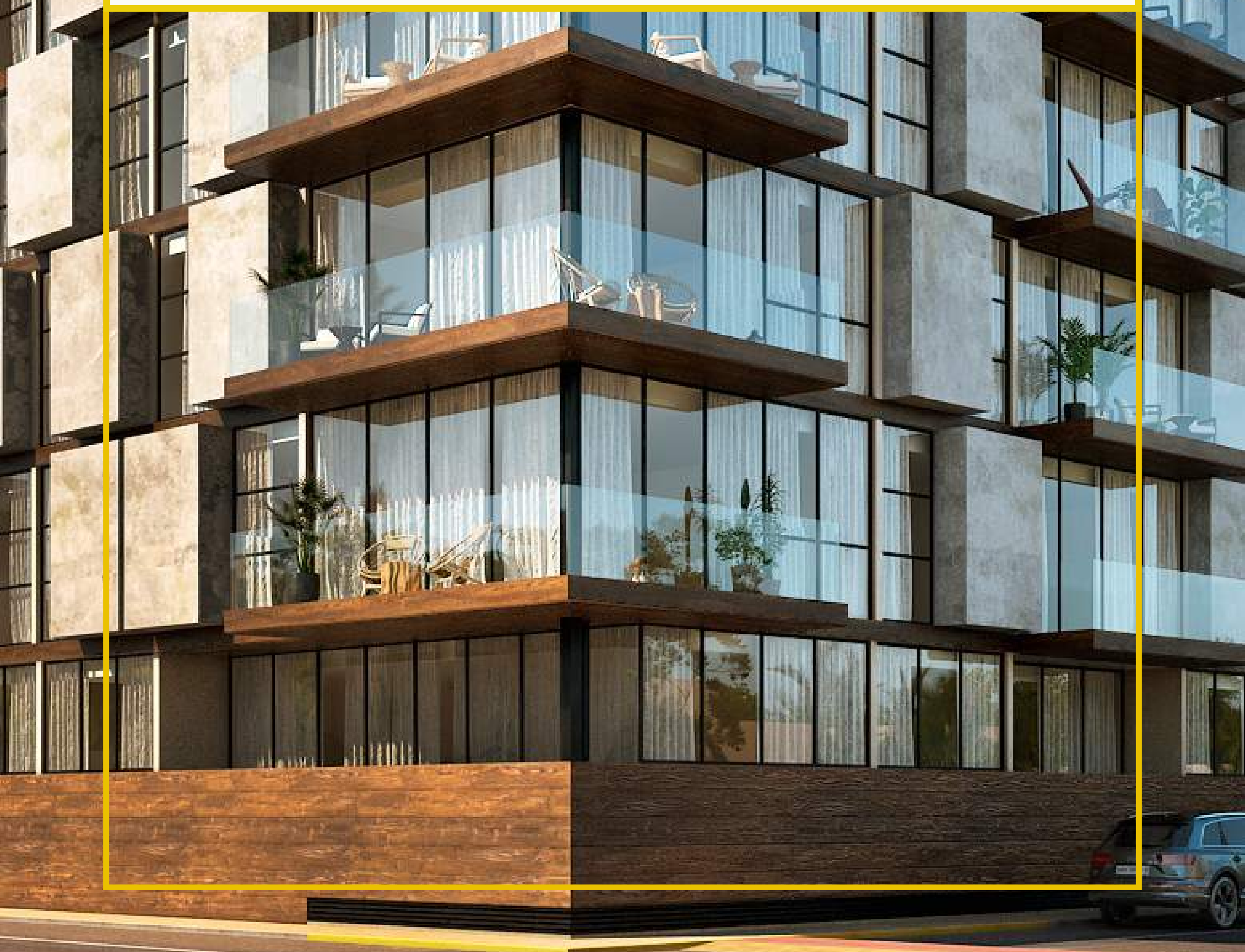
*Rooftop with a interior view into the bulding,
Providing life into the common areas*

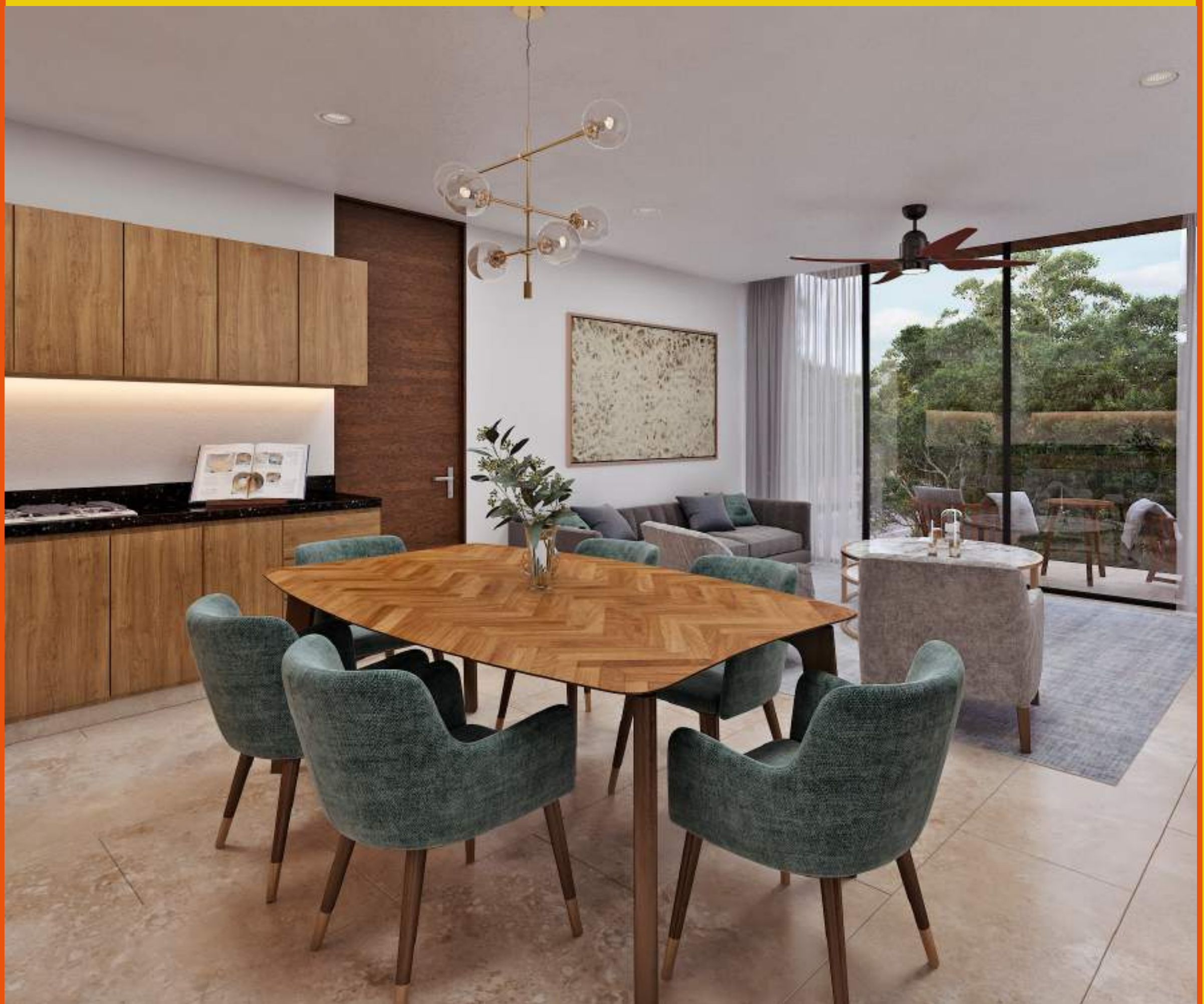
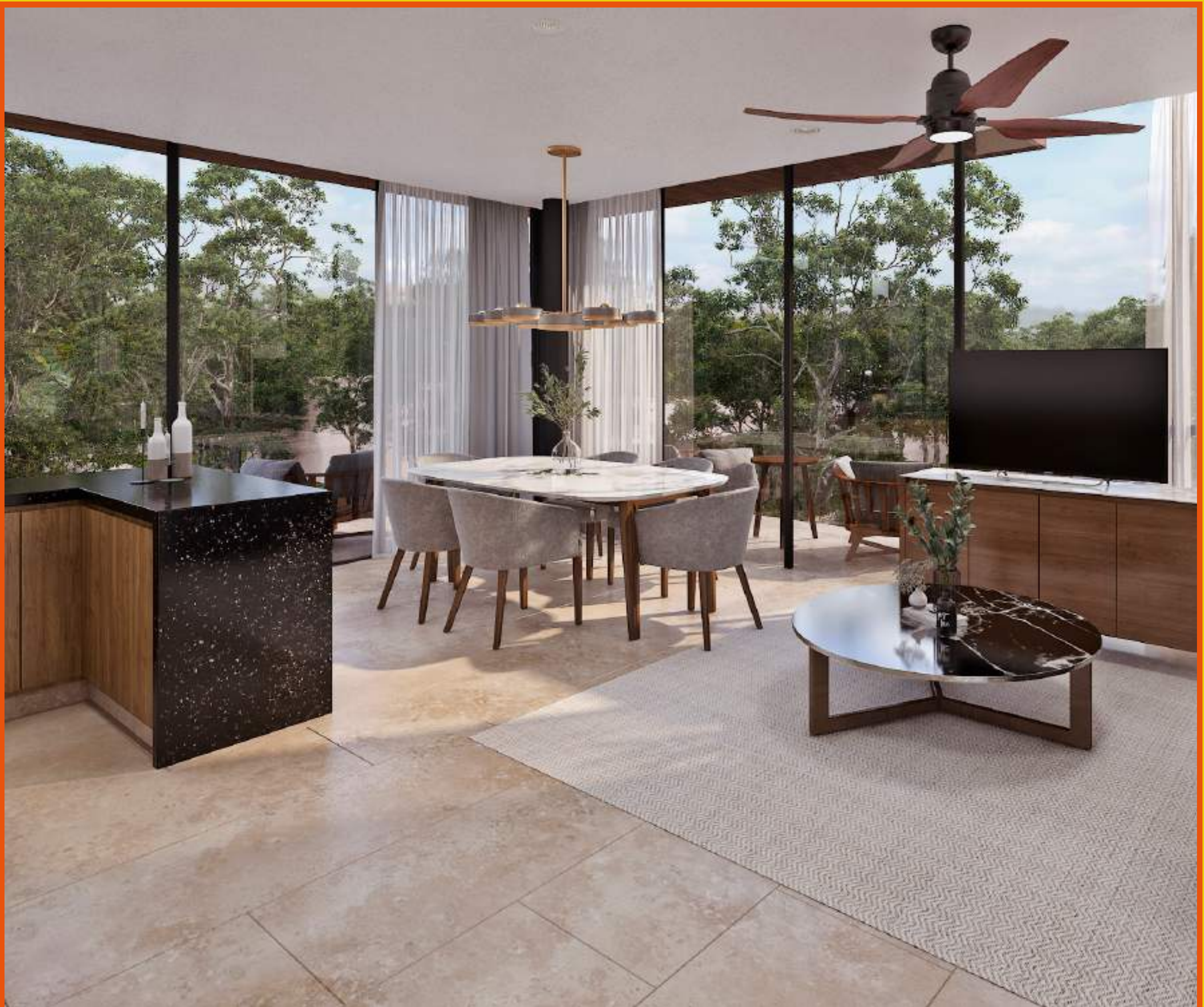


6 Levels 92 Units ,
From 559.723 ft²
with 1, 2 Y 3 Bedrooms



Master Plan





Dinning table with living room



Master Bedroom



Double bed bedroom



Type of Departments

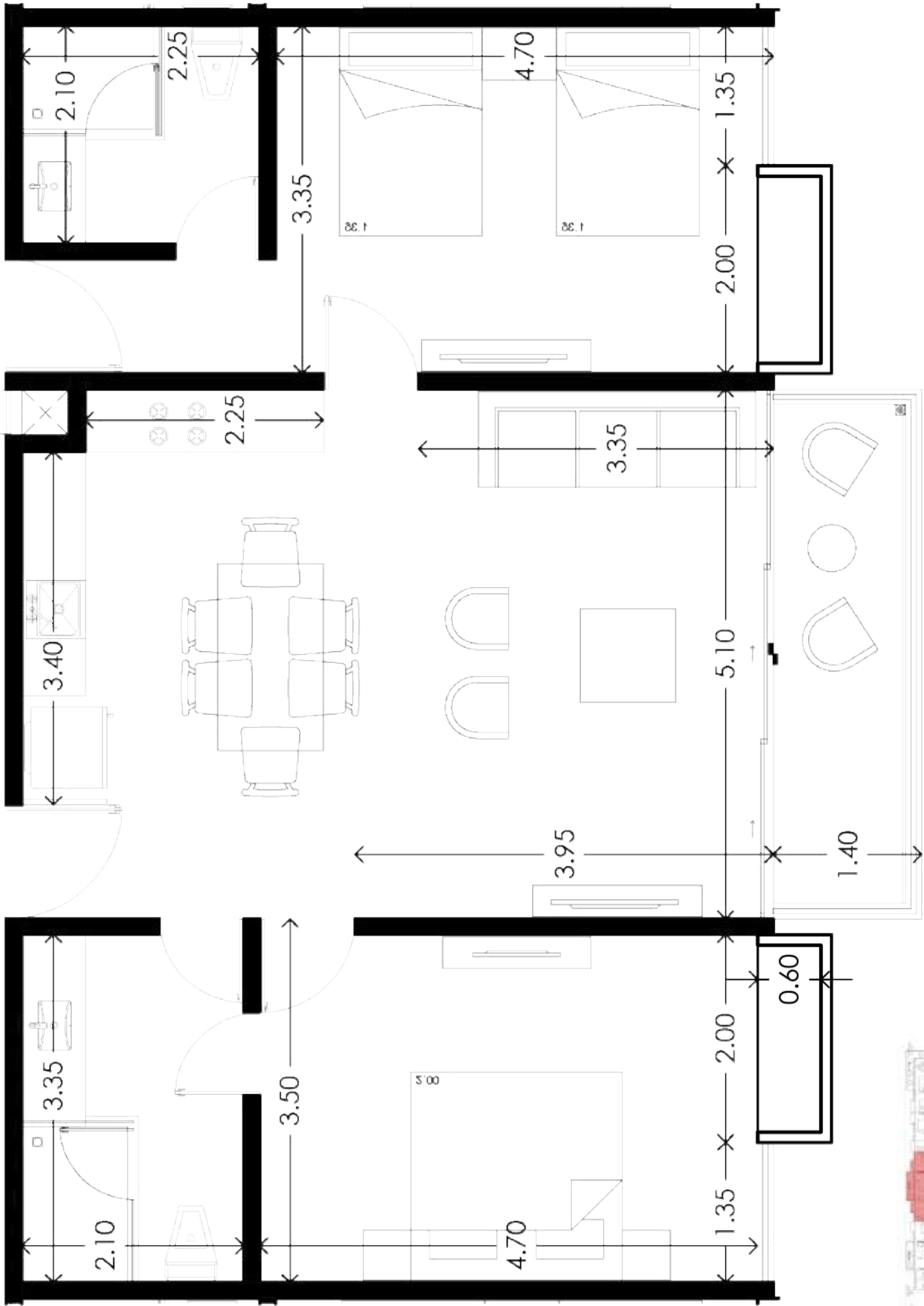


Type A1 Department



Type A1 Department

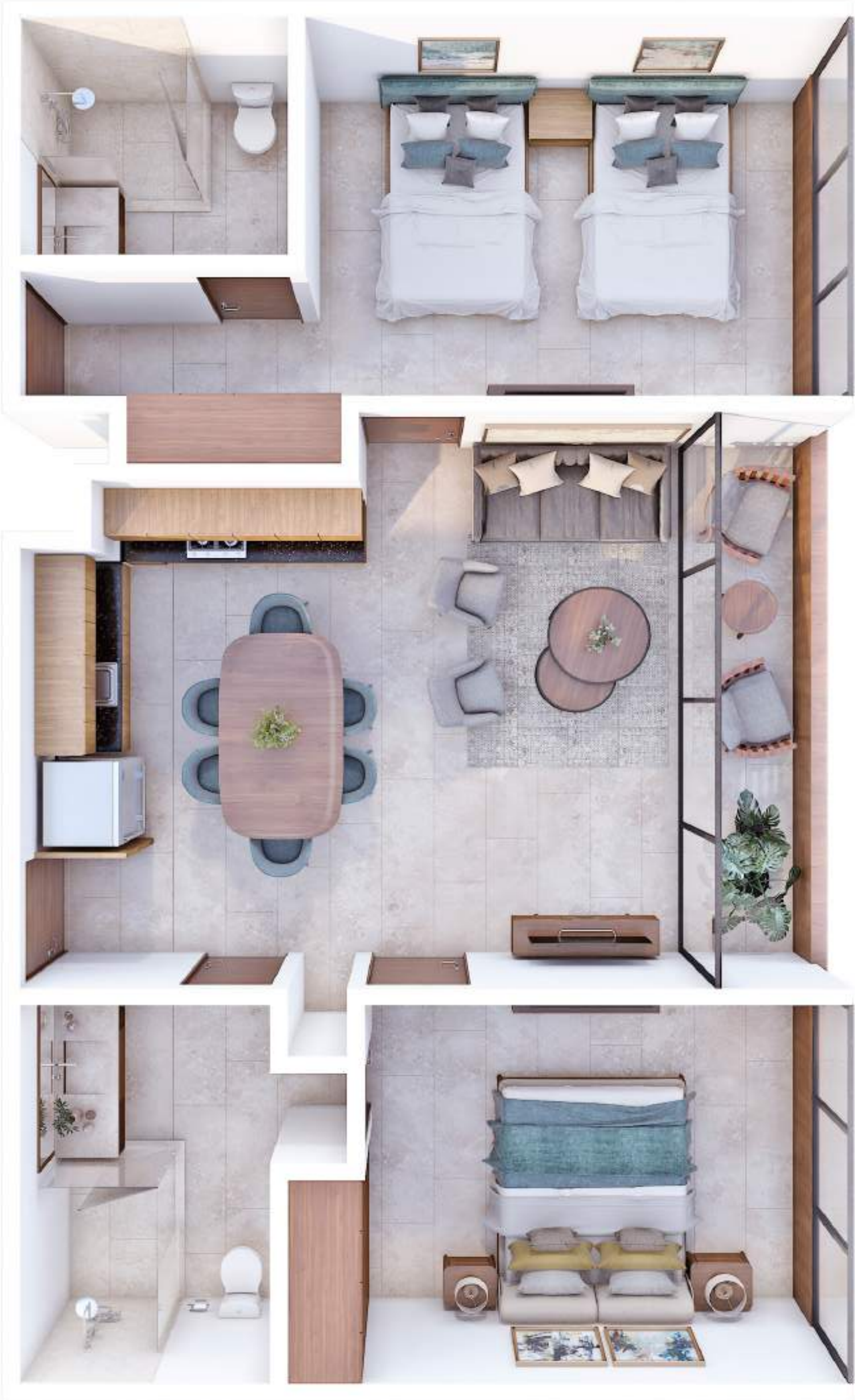
Type	A1	Coverd Terrace	76.85 ft ²
Bedrooms	2	No Coverd Terrace	0 ft ²
Bathroom	2	Interior surface	922.46 ft ²
Total Surface			999.32 ft ²



Top Floor

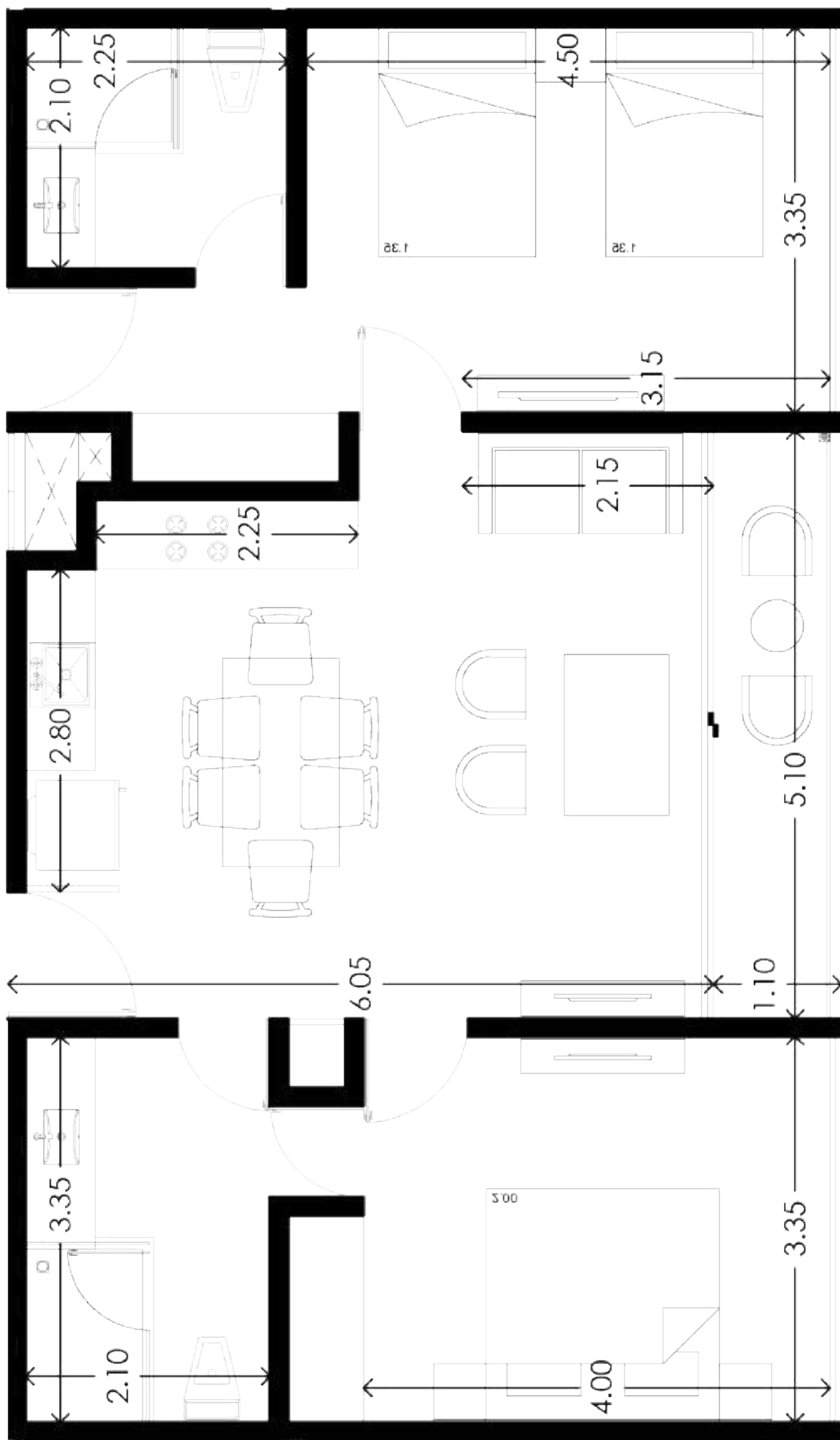


Type A2 Department

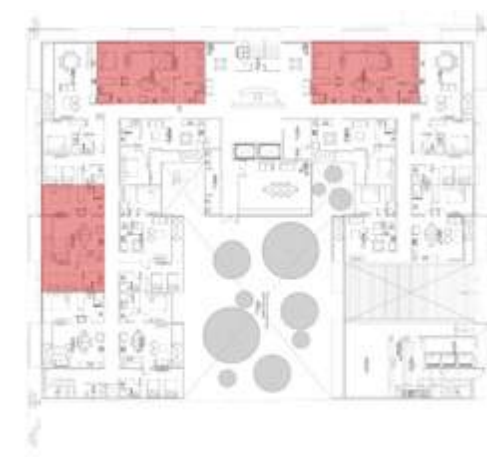


Type A2 Department

Type	A2	Coverd Terrace	54.89 ft ²
Bedrooms	2	No Coverd Terrace	0 ft ²
Bathroom	2	Interior surface	823.97 ft ²
Total Surface			878.87 ft ²



Top Floor



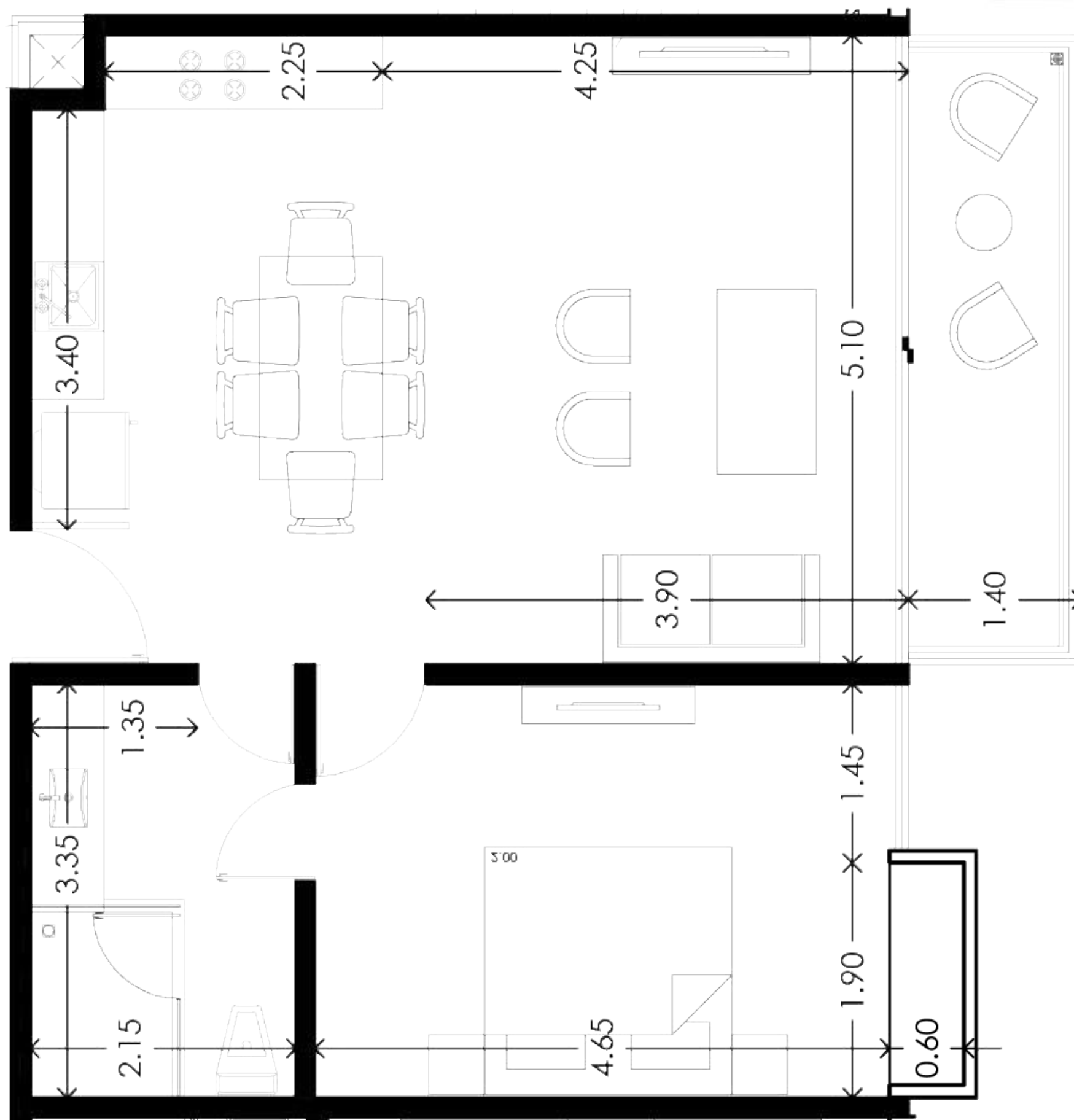
Type B1 Department



Type B1 Department

Type	B1	Coverd Terrace	76.85 ft ²
Bedrooms	1	No Coverd Terrace	0 ft ²
Bathroom	1	Interior surface	654.98 ft ²
Total Surface			67.99 ft ²

Top Floor

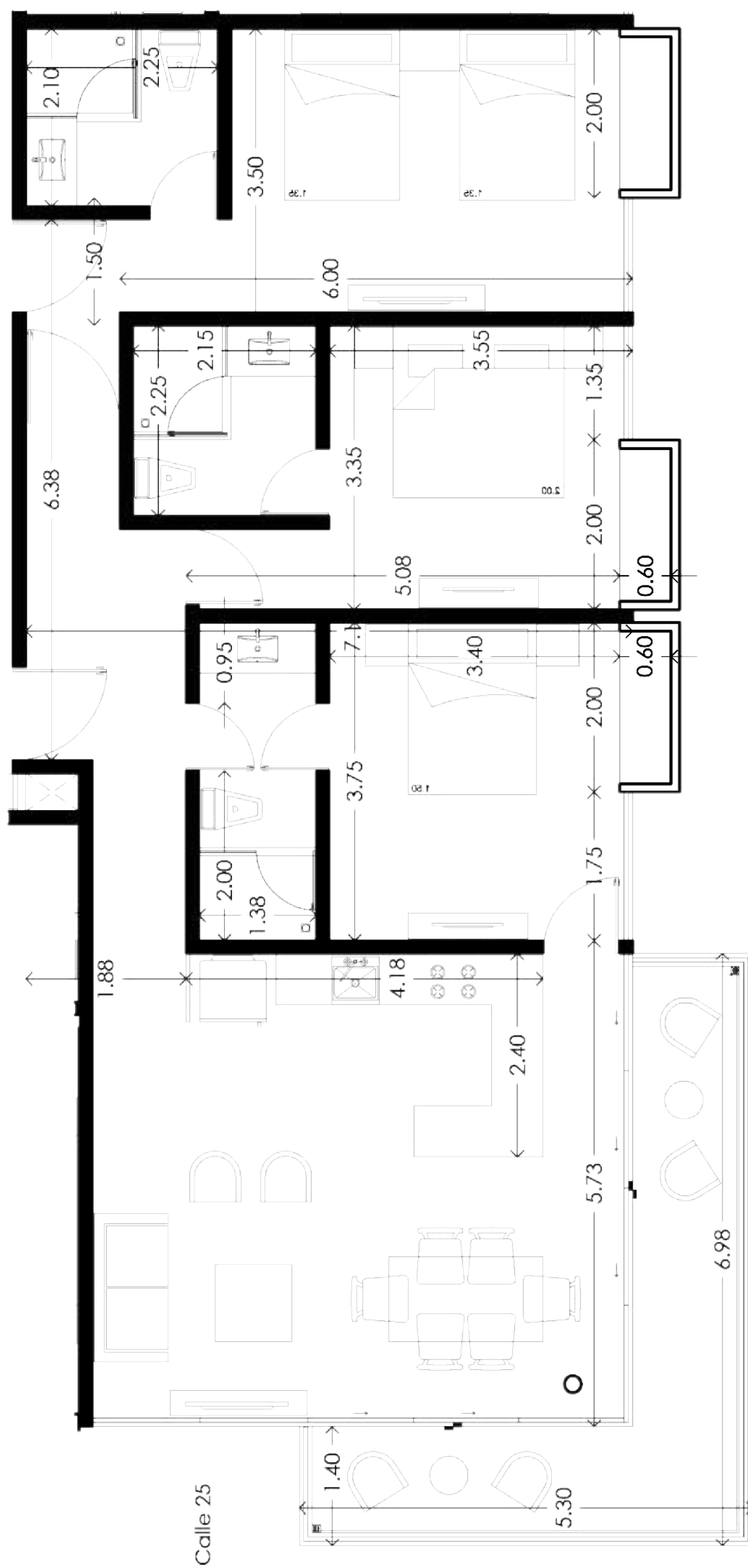


Type C1 Department



Type C1 Department

Type	C1	Coverd Terrace	163.61 ft ²
Bedrooms	3	No Coverd Terrace	0 ft ²
Bathroom	3	Interior surface	1197.48 ft ²
Total Surface			1361.09 ft ²



Top Floor



Type Y1 Department



Type Y1 Department

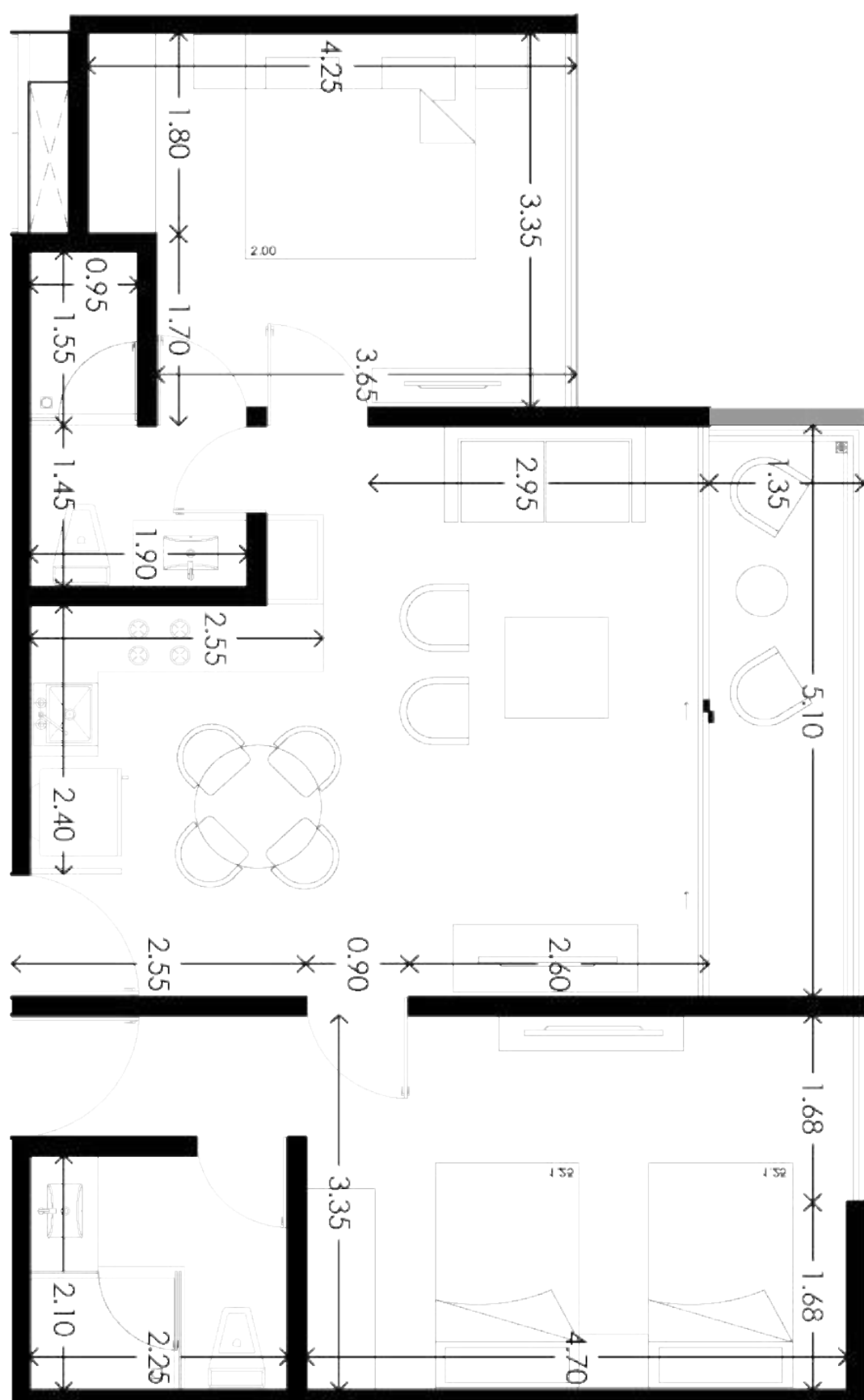
Type	Y1	Coverd Terrace	
Bedrooms	2	No Coverd Terrace	
Bathroom	2	Interior surface	
	74.05 ft ²	Total Surface	

0 ft²

755.62 ft²

829.68 ft²

Top Floor

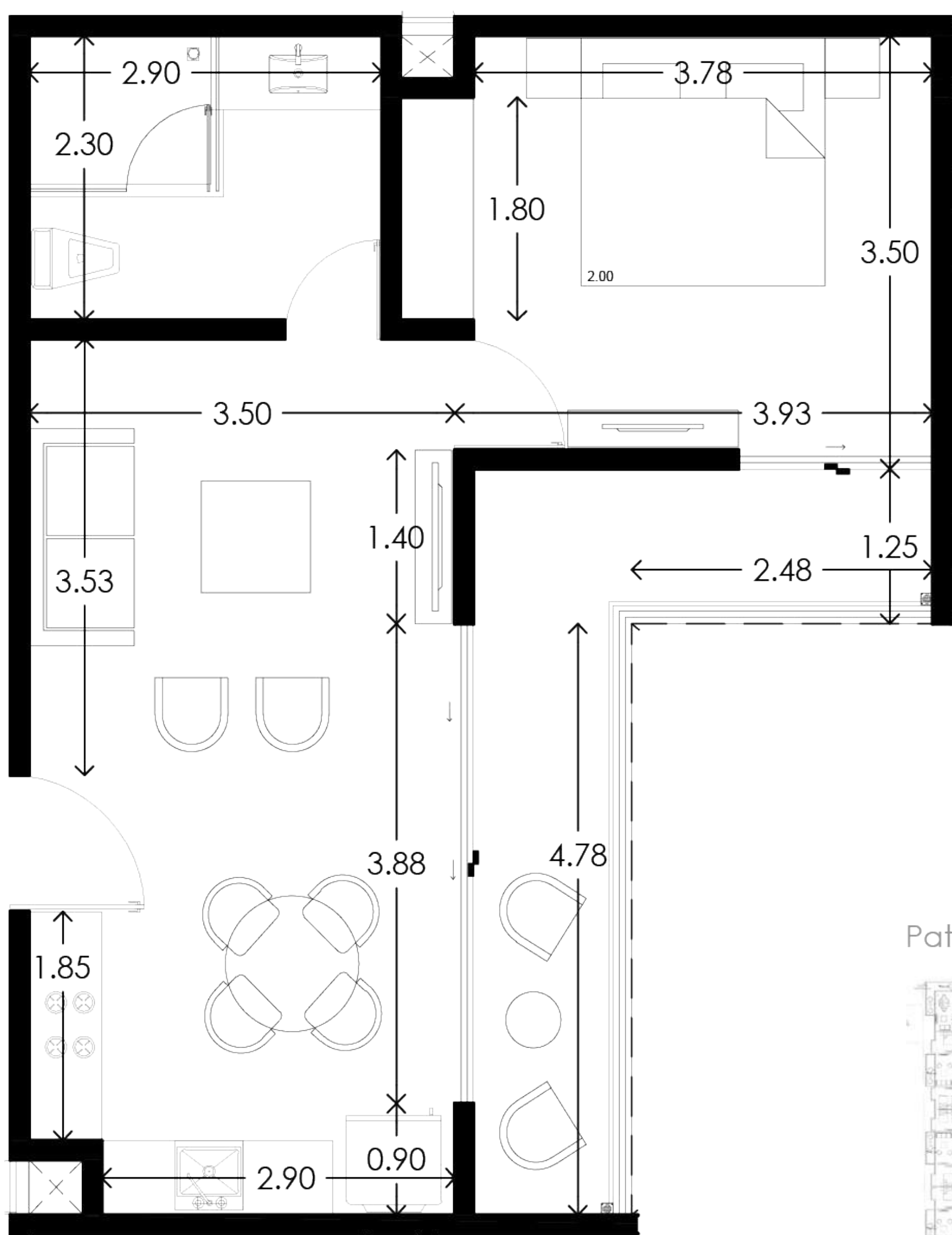


Type Z Department



Type Z Department

Type	Z	Coverd Terrace	117.32 ft ²
Bedrooms	1	No Coverd Terrace	0 ft ²
Bathroom	1	Interior surface	510.20 ft ²
Total Surface			627.53 ft ²



Patio Top Floor



Type PH-A Department



Low Level

Type PH-A Department

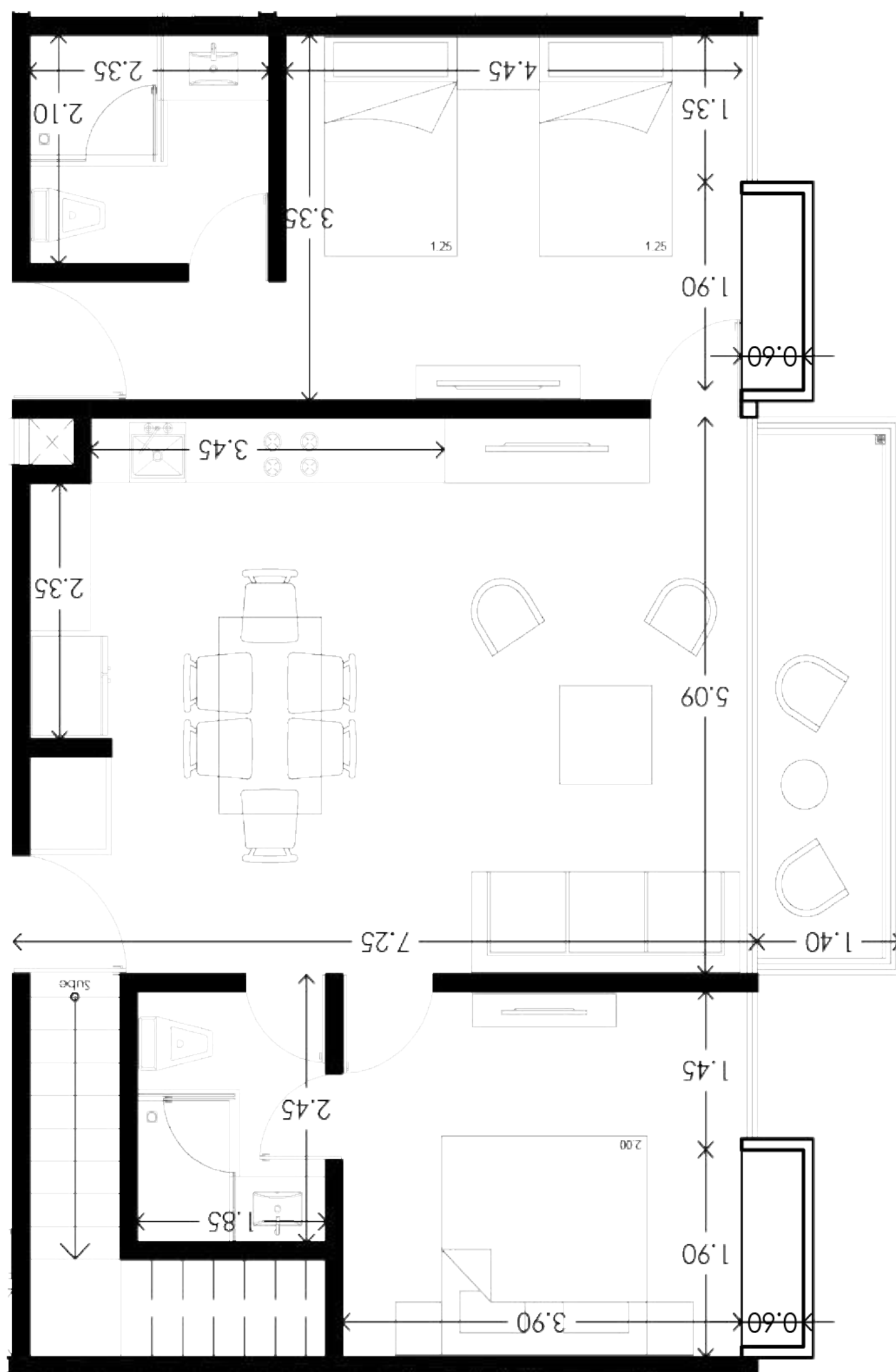


Top Floor

Type PH-A Department

Type	PH-A	Coverd Terrace	76.85 ft ²
Bedrooms	3	No Coverd Terrace	316.99 ft ²
Bathroom	3	Interior surface	1343.33 ft ²
Total Surface			1737.18 ft ²

Low Level



Top Floor

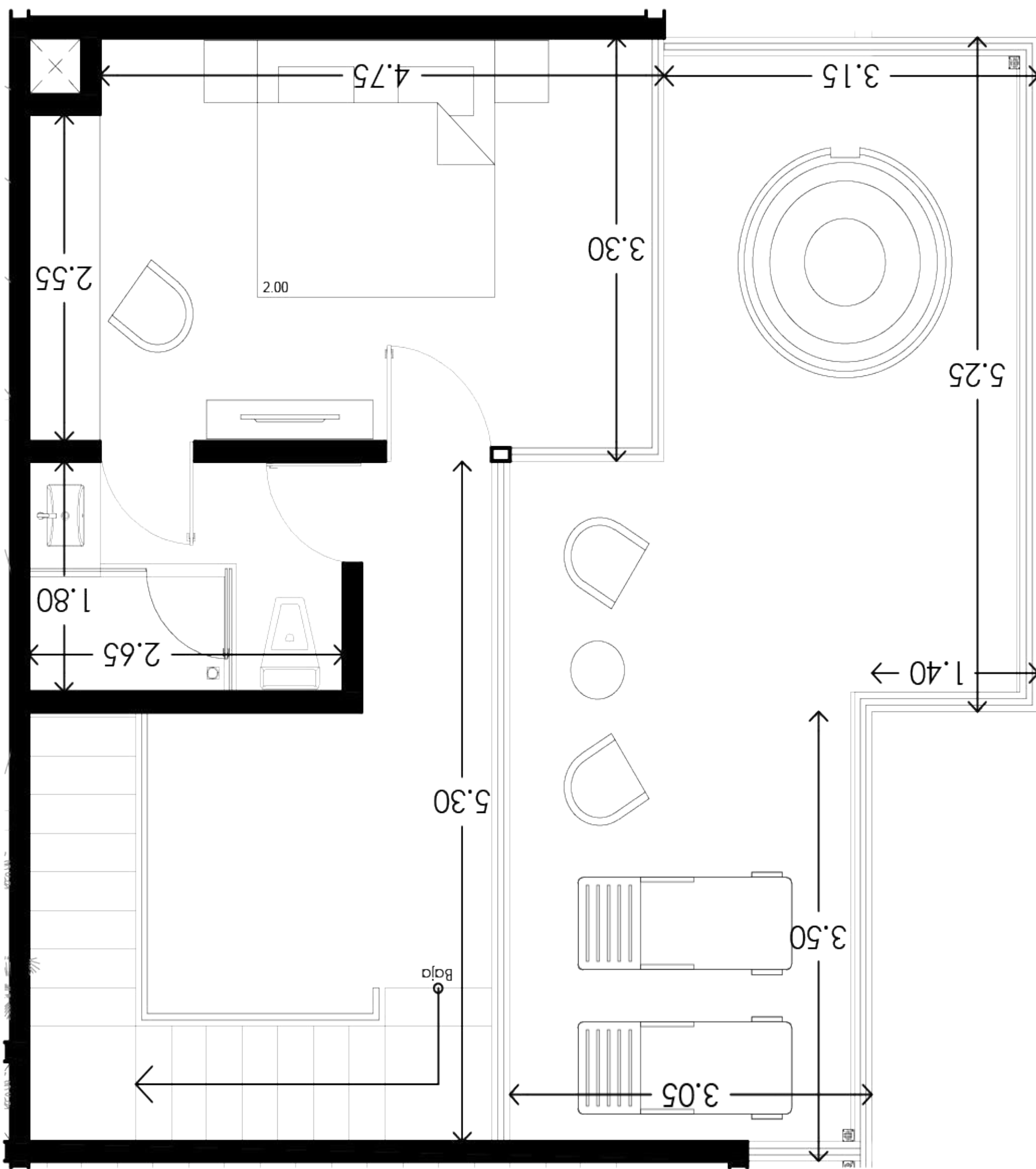


Type PH-A Department

Top Floor



Top Floor



Type PH-B Department



Low level

Type PH-B Department

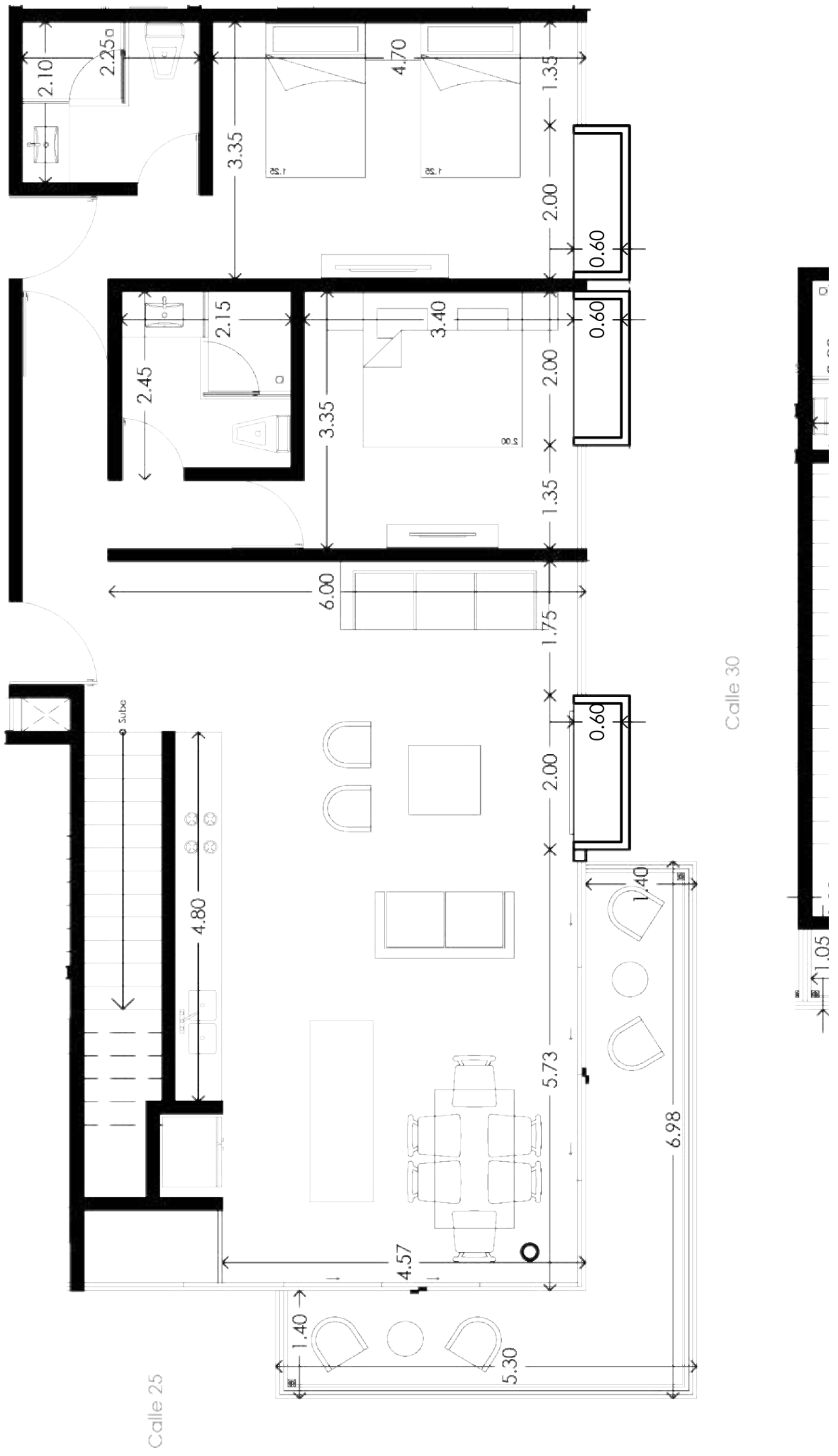


Top Floor

Type PH-B Department

Type	PH-B	Coverd Terrace	163.61 ft ²
Bedrooms	3	No Coverd Terrace	313.76 ft ²
Bathroom	3	Interior surface	1702.85 ft ²
Total Surface			2180.23 ft ²

Low level



Top Floor

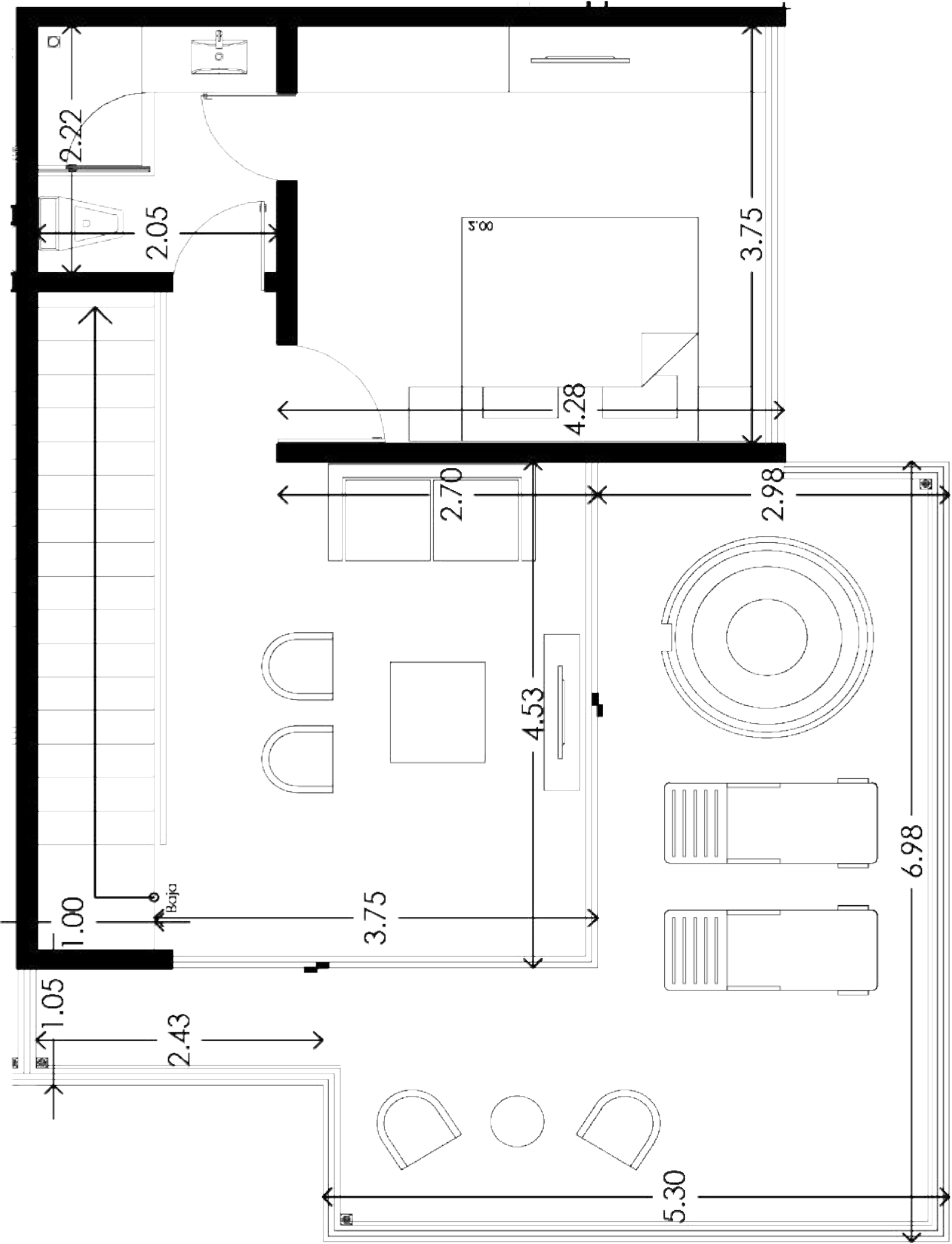


Type PH-B Department

Top Floor



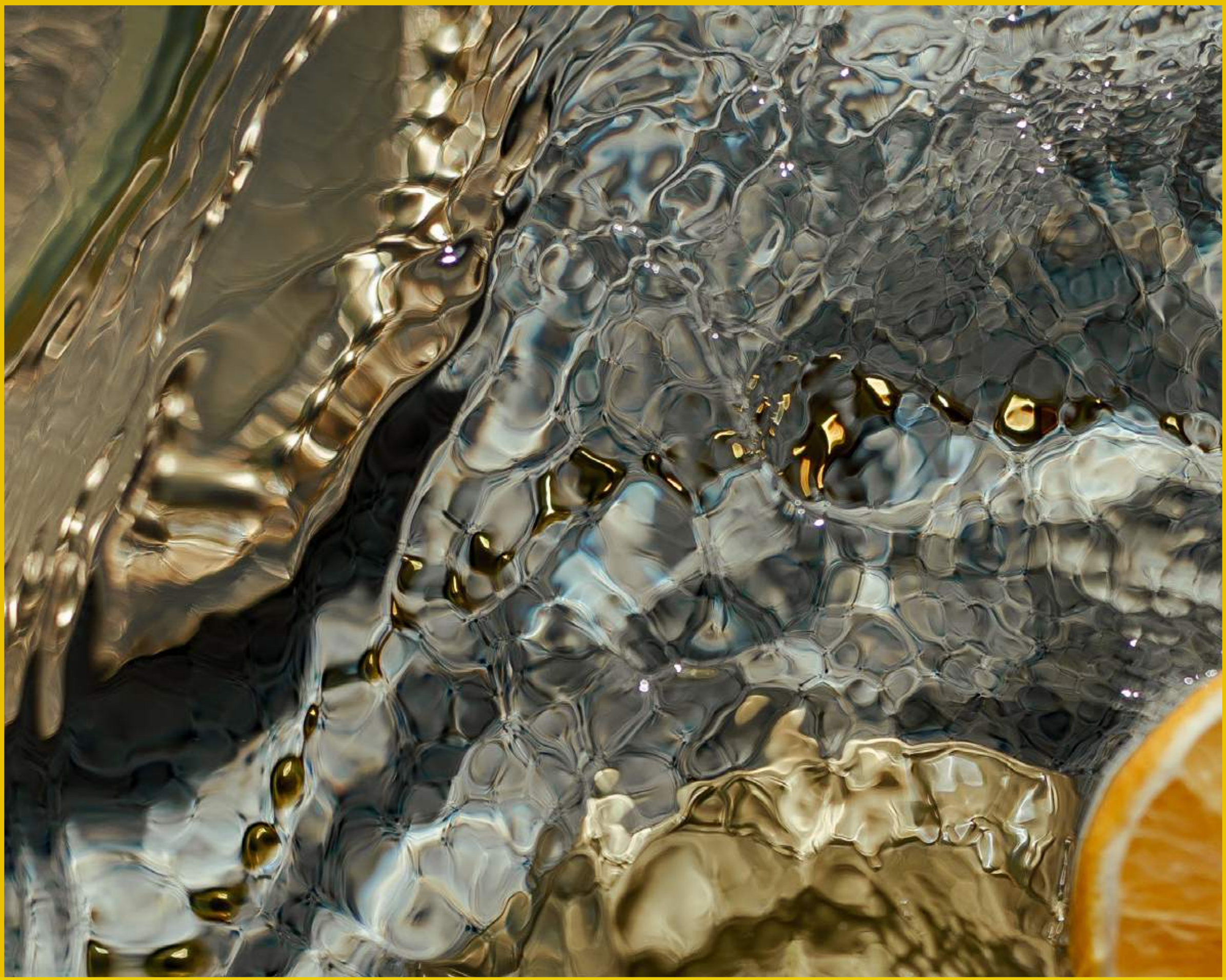
Low level



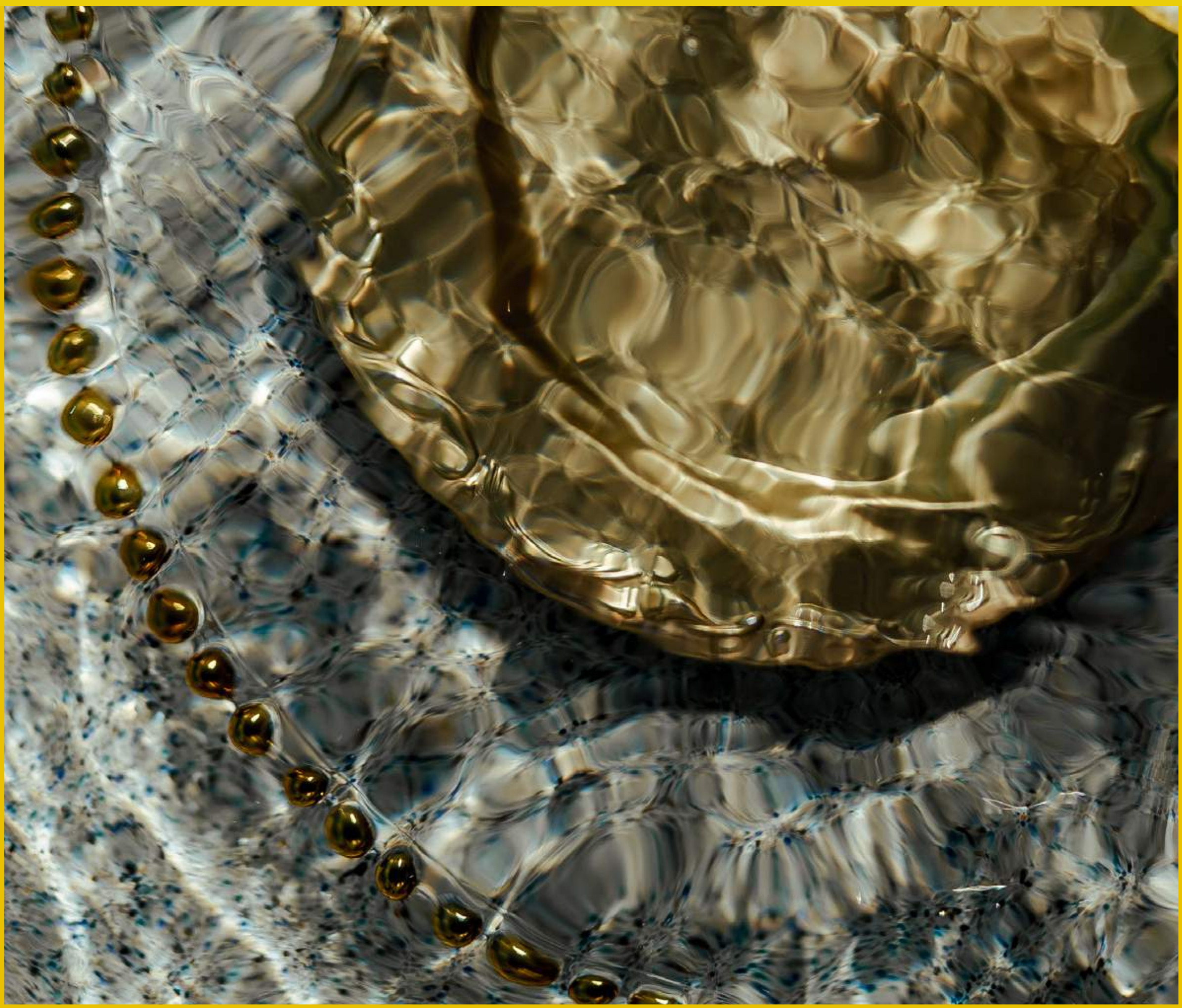
Ceiba AT 25

LEARN ABOUT US
WORK IN PROGRESS



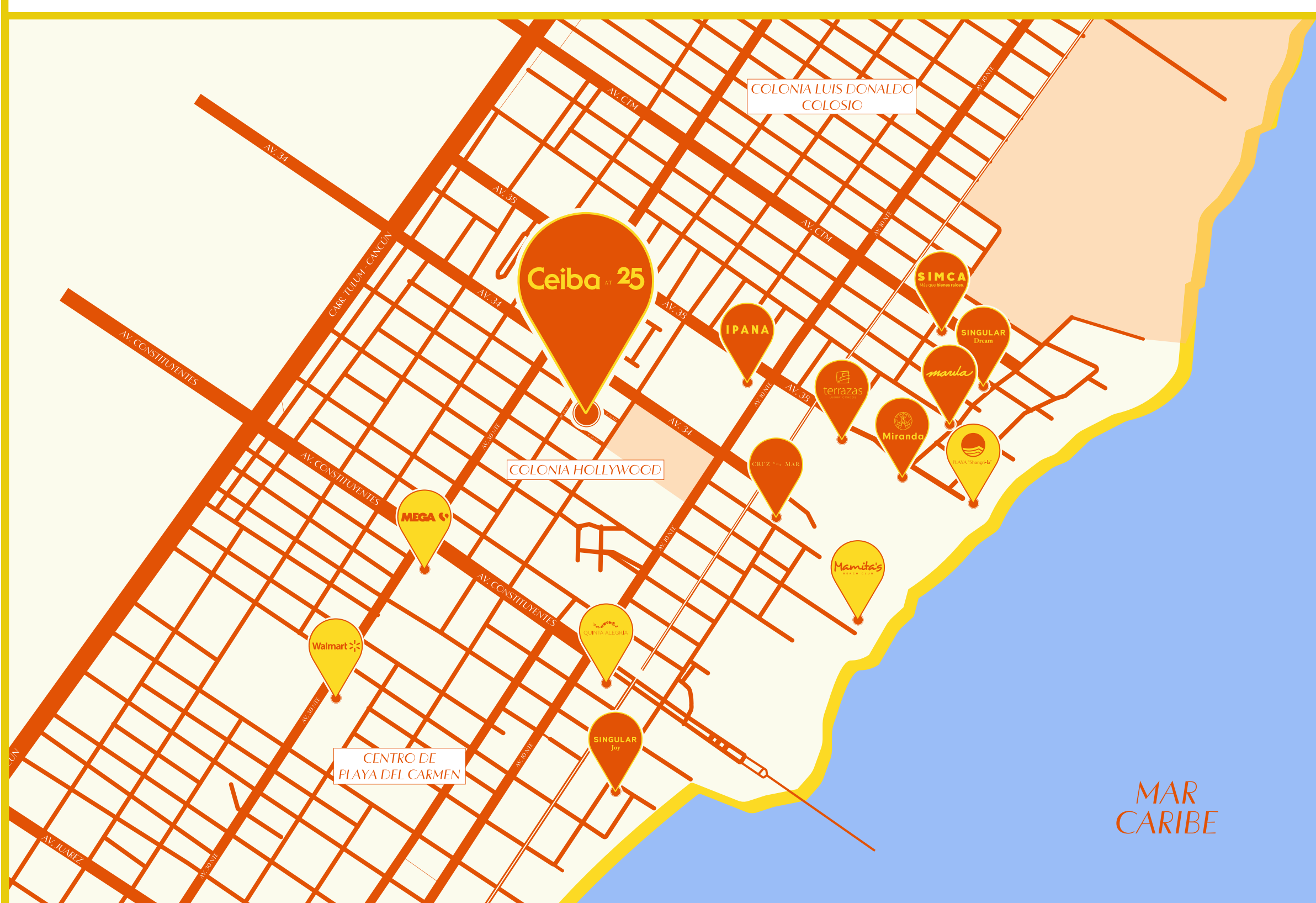


Location



The location is great, the lifestyle you dreamed is in Playa del Carmen. By drawing the curtains in your room you will discover an exceptional natural and cultural setting. Located in the Golden Zone, steps from its beaches bathed in white sand, the amazing turquoise waters, and its iconic 5th Avenue, internationally recognized for its gastronomic and commercial diversity.

The location is great,
the lifestyle that can only be
breathed in Playa del Carmen.



- 📍 *500 meters from Fifth Avenue*
- 📍 *800 meters from the*
- 📍 *1 hour from Tulum Archeological Zone*
- 📍 *45 Minutes from Cancún Airport*

Ceiba AT 25

CONDO PARADISE

800 56 SIMCA | SALES@SIMCA.MX



SIMCA